

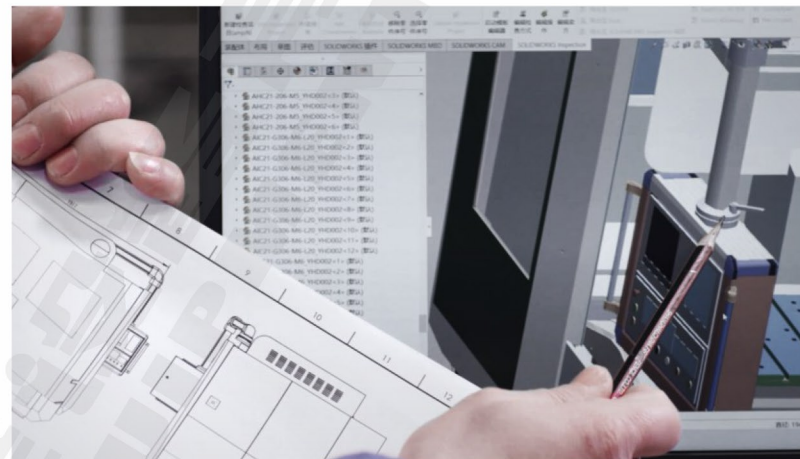
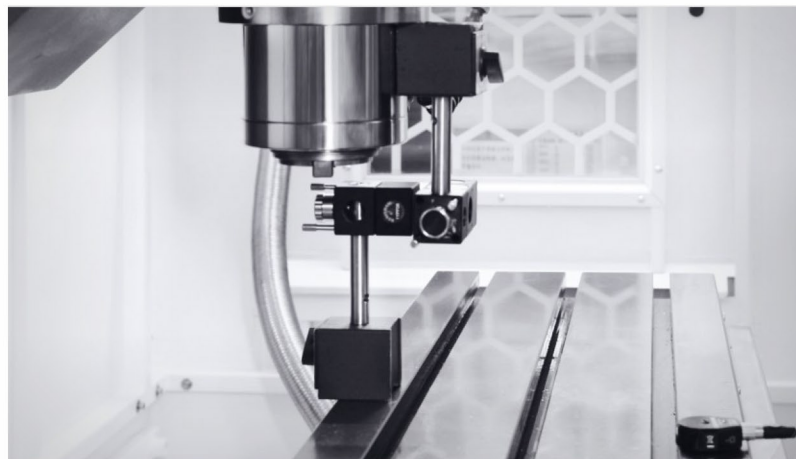
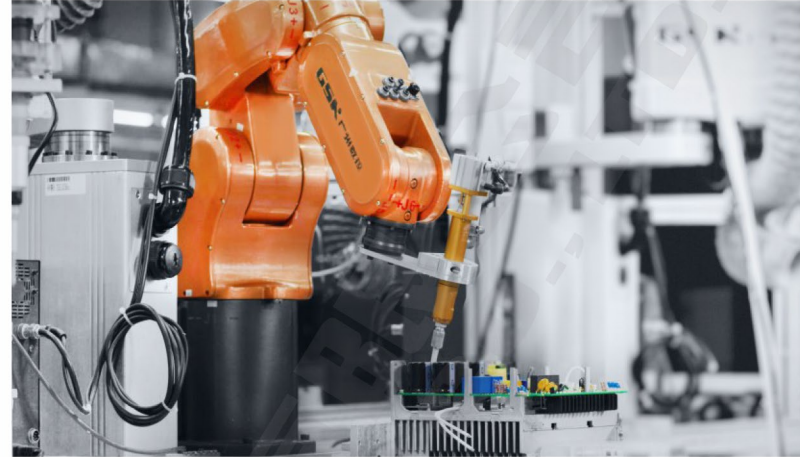
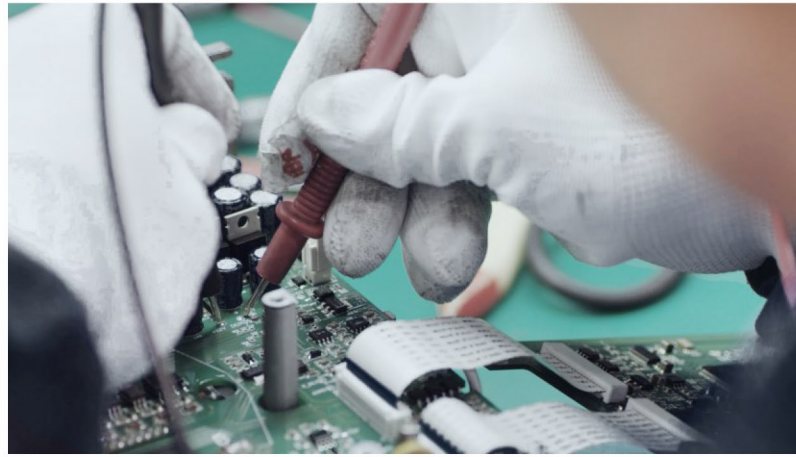
服务与支持

SERVICE & SUPPORT

400+ 55+ 20+ 99% 99.5%
售后技术支持人员 国内办事处 国外服务商 售后人员到位率 (24h内) 售后人员到位率 (48h内)

精益求精，让用户满意。为广大消费者提供“专业、快捷、周到”的售前、售中、售后服务，让您放心使用！

Strive for excellence and satisfy users. To provide consumers with "professional, fast, and thoughtful" pre-sales, in sales, and after-sales services, so that you can use them with confidence!



广州市广数职业培训学院

VOCATIONAL TRAINING INSTITUTE, GUANGZHOU CITY.

开设职业培训学院，师资力量雄厚，实操设备充足，以技能培训为特色，注重实战型的技能培训，校企合作、企业为主、能力主导，为行业培养第一线适应性强、高素质的技术工人和服务人员。

Establishing a vocational training college with strong teaching staff, sufficient practical equipment, and a focus on skill training, emphasizing practical skills training, school enterprise cooperation, enterprise oriented, and ability driven, to cultivate frontline adaptable and high-quality technical workers and service personnel for the industry.



广州数控设备有限公司
GSK CNC EQUIPMENT CO., LTD.
400-0512-028
地址：广州市黄埔区观达路22号 邮编：510530

销售热线：020-82221187
传真：020-81994083
网址：www.gsk.com.cn



@广州数控GSK



@广州数控



@广州数控GSK



gzgsk.1688.com



@广州数控设备有限公司

20240329

GSK

数控神焊

全数字控制逆变MIG/MAG弧焊电源

Full Digital Control Contravariant MIG/MAG Arc Welding Power

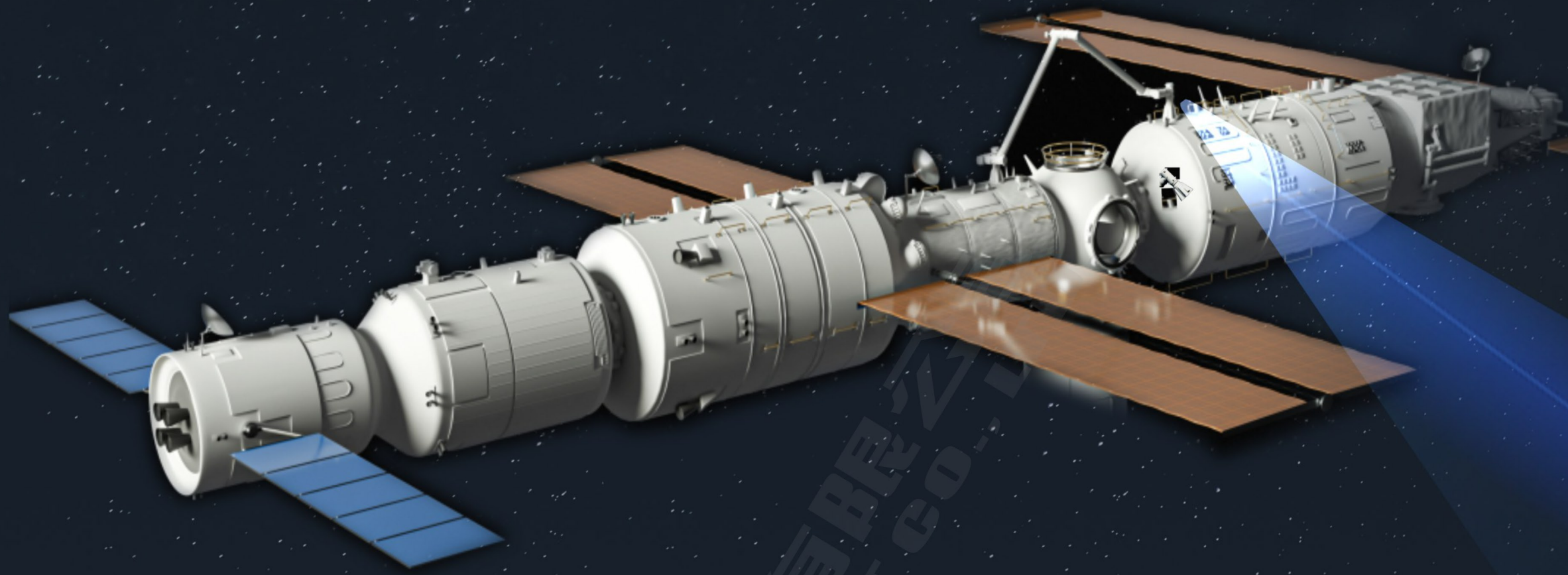
GSK MDC-500P全数字高端焊机

GSK MDC-500P Full Digital High-End Welding Machine



成型美观 / 飞溅量低 / 操作方便 / 安全节能 / 与GSK焊接机器人紧密配合

Beautiful shaping / Low splash / Easy operation / Safety & energy conservation / Close cooperation with GSK welding robot



GSK RH06B1七关节工业机器人与太空舱机器人
孪生，下凡与GSK数控神焊相遇…

在极限焊接与增材制造大显身手 0.1轨迹精度
4m/min焊速 0.3薄板~中厚板 多合金增材能力超
凡…

GSK RH06B1 7-joint industry robot Twinned with capsule
robot, Collaborate with advanced GSK MDC welder,
Makes a Master of Extreme Welding and Additive
Manufacturing

0.1mm path accuracy, 4m/min welding speed, ≥ 0.3 mm
plates. Multi-alloy additive Capabilities

神焊焊接 焊接增材

MAGIC WELDING MAGIC ADDITIVE



GSK RH06B1七关节工业机器人
GSK RH06B1 7-JOINT INDUSTRY ROBOT

GSK MDC-500P高端数字焊机
GSK MDC-500P ADVANCED DIGITAL WELDER

诚征全球代理
SINCERELY SEARCH FOR GLOBAL AGENTS

400-0512-028
WWW.GSK.COM.CN

关于我们 ABOUT US



数控功能测试实验室 Testing laboratory with CNC function



SMT精密元件贴片车间 Chipping workshop of SMT precision element



目录 Catalog

关于我们 About Us	01
产品介绍 Technology Introduction	03
微创冷焊工艺特点 MDC Welding Technology Features	07
焊接工艺 Welding Technology	09

焊接应用 Welding Applications	12
GSK 数控神焊单元 GSK CNC Magic welding Unit	19
专利认证 Patent certification	23
规格参数 Specification Parameters	24

广州数控设备有限公司（简称：广州数控、GSK）成立于1991年，历经艰苦创业、勤奋创新、智能创造再起步，成为国家级高新技术企业，作为国内专业技术成熟的成套智能装备解决方案提供商，被誉为中国南方数控产业基地。

广州数控是中国机床工具工业协会理事长单位、中国机器人产业联盟副理事长单位、中国软件行业协会理事长单位、中国机械联合会理事单位、中国机电装备维修与改造技术协会理事单位。两次荣获国家科学技术进步奖二等奖，拥有国家级企业技术中心、博士后科研工作站、工程技术研发中心、工程实验室，公司拥有精良的生产设备和工艺流程，科学规范的质量控制体系保证每套产品合格出厂；拥有完善的售后服务网络和专业的技术服务团队，以“精益求精，让用户满意”的服务精神，全方位、多层次、科学高效的服务管理方式和手段，保证用户在短时间内得到快捷、可靠、有效的响应。

GSK CNC Equipment co., Ltd. (hereinafter referred to as: GSK) was established in 1991, which becomes a National high-tech enterprise after undergoing the hard work, diligent innovation and restarting with intelligent creation. As a provider of complete intelligent equipment solutions with mature professional technologies in China, it is known as the CNC industry basement in Southern China.

GSK is the company of the Chairman of China Machine Tool Industry Association, the Vice Chairman of China Robotic Industry Alliance, the Chairman of China Software Industry Association, the Director of China Machinery Federation, and the Director of China Mechanical and Electrical Equipment Maintenance and Transformation Technology Association. It won the National Science Progress Award twice. It has a national enterprise technology center, post-doctoral research workstation, engineering technology R&D center, and engineering laboratory. GSK owns excellent production equipment and technology procedure, and a scientific and standardized quality control system to ensure that each set of products are qualified; we have a perfect after-sales service network and a professional technical service team; the service spirit of "Keeping Improving and Satisfying to User"; the management methods and means of the services with all-round, multi-level and scientific and efficient and ensure that users can get a fast, reliable and effective response in a short time.

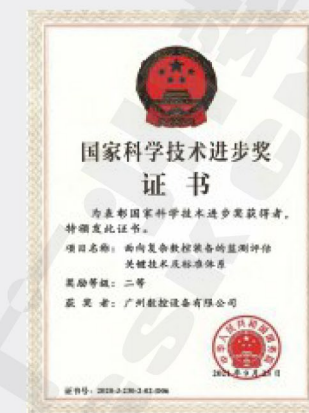
从2009年承担数控机床专项至今，广州数控每年近10万套标准型数控系统（部分高档系统）配套，2018年，广州数控实现第100万套数控系统下线交付，百万套数控系统装备上百万台“工业母机”，支撑国内一大批机床制造企业健康运行。

Nearly 100,000 sets of the standard CNC systems (high-level systems including) are configured per each year of GSK, since undertaking the Special CNC machine tool project in 2009. In 2018, GSK achieved the off-line delivery of the one millionth CNC systems and the million sets of CNC systems that equipped with millions of "Industry Main Machines", which supported the health operation of a large number of domestic machine tool manufacturers.

依托30多年积累的数字控制技术，广州数控通过大量的创新研制出掌握核心技术的系列工业机器人及全数字高端焊机产品。同时充分发挥广州数控在高档机床、高端数控系统、五轴加工机床等设备和在机床行业多年加工经验的优势，产品本体零件全部自加工，有力控制成本和保障加工质量。

GSK studied technology-cored series industry robot and high-end full digital welding products by a large number of innovations based upon the digital control technology accumulated more than 30 years. At the same time, GSK fully plays a role of advantages in high-level machine tool, high-end CNC system and five-axis machining device, etc. in the years of experience in the machine tool industry; as well, the overall main body components are processed by ourselves and properly controlled the cost and guaranteed the machine quality.

荣誉资质 HONORS AND QUALIFICATIONS



国家科学技术进步奖
(二等奖)

National Science and Technology Progress
Award(the 2nd Prize)



国家科学技术进步奖
(二等奖)

National Science and Technology Progress
Award(the 2nd Prize)



制造业单项冠军示范企业
(机床数控系统)

Single Champion Demonstration Enterprise
in Manufacturing Industry (Machine CNC
System)

GSK MDC-500P 全数字高端焊机

GSK MDC-500P
Full Digital High-end Welding Machine

焊机概述

Overview

采用碳化硅作为主回路开关器件，输出回路开关频率高达128kHz，具备优秀的动态响应能力。

针对MDC焊接工艺（推拉丝）专门研制了送丝专用的伺服驱动和电机，使得送丝系统能够完成高频的送丝和回抽动作。

采用FPGA+DSP双核控制，能够实现复杂的数字化焊接电流波形控制，配合上述送丝系统实现MDC直流推拉丝、脉冲、双脉冲以及直流和脉冲复合等多种焊接工艺。

It is used the silicon carbide as the main circuit switch components and up to 128kHz of the output circuit switch frequency, and it owns excellent ability of dynamic response as well. It is studied the dedicated servo drives and motors for wiring based upon the MDC welding technology (Wire-pulling); so that the wiring system can be performed high frequency wiring and retracting motions. It is adopted with the FPGA+DSP dual-core control, which can be carried out the complicated digitization welding current waveform control and achieved the welding technologies such as the MDC DC wire-pulling, pulse, dual-pulse and DC and pulse compound etc. based upon the above-mentioned wire-feeding system. It is the Top welding velocity in the word.



焊机优势

Advantage

世界领先的焊接速度
World-class Welding Speed

世界一流的焊接质量
World-class Welding Quality

个性化智能焊缝管理
Personalized Smart Seam Management

高度集成化的远程管理
Highly integrated remote management

多种微创冷焊节电模式
Multiple Minimally Invasive Cold Welding
Power-saving Modes

0.1焊缝轨迹重现精度
0.1 Weld Trajectory Reproduction Accuracy

焊机特点

Features

8寸触摸屏

8 Inch Touch Screen

简单易操作,中英文交互界面

Simple and easy to operate, can be operated with gloves, Chinese and English operation interface.

首创防尘技术

Pioneer Of Dust-Proof Technology

内外隔绝, 极致防尘, 十年如新

Isolation between internal and external, extreme dustproof, ten years used as a new.

云管理系统

Cloud Management System

联网实现设备管理,数据库管理与系统维护

Networking for device management, based on the library management and system maintenance.

MDC焊接工艺

MDC Welding Process

0.3mm超薄板低飞溅高速焊

0.3mm ultra-thin plate with low splash and high velocity welding.

焊机系统

Welding System

送丝系统由伺服送丝机、缓冲器与伺服焊枪等部件组成。

适用于微创冷焊、高速焊、间断焊、直流低飞溅、脉冲等多种焊接工艺应用。 Suitable for various welding processes such as minimally invasive cold welding, high-speed welding, intermittent welding, DC low spatter, pulse welding, etc.



伺服送丝机

Wire-Feeding Machine Of Servo

采用定制的伺服驱动与电机，实时调节送丝速度，确保送丝精准稳定。

The customized servo drive and motor are used to adjust the speed of wire feeding in real-time and ensure accurate and stable of wire-feeding.



缓冲器

Buffer

充当伺服送丝机与伺服焊枪连接的桥梁，弹性容纳焊丝，实时反馈焊丝状态，调整送丝速度使送丝过程更加平稳。

The buffer, is acted as the bridge between the servo wire-feeding machine and servo welding machine, which can be held the flexible welding cable, feedback the state of welding in real-time, and adjusted the speed of wire-feeding so that the process of wire-feeding is more stable.



伺服焊枪

Servo Welding Gun

焊丝进动速度与方向随不同工艺需求周期性变化

The wire precession speed and direction change periodically with different technology requirements.

推拉丝焊接过渡频率最高可达200Hz

Push-draw welding transition frequency up to 200Hz

推拉丝加速度最高可达745m/s

Up to 745m/s of push-pull acceleration

百兆以太网通信

The 100-megabit Ethernet communication



GSK工业机器人电柜

GSK Industrial Robot Electric Cabinet



GSK工业机器人
GSK Industrial Robot



GSK MDC-500P 全数字高端焊机

GSK MDC-500P Full digital high-end welding machine



数字焊机水箱

Digital Welding Machine Water Tank

结构造型独特，外观新颖，品牌识别性强。
Unique structural shape, novel appearance and strong brand recognition.

结构紧凑，工艺先进，结实可靠。
Compact structure, advanced technology, strong and reliable.

具备水位高度测量、报警功能。
Water level height measurement and alarm function.

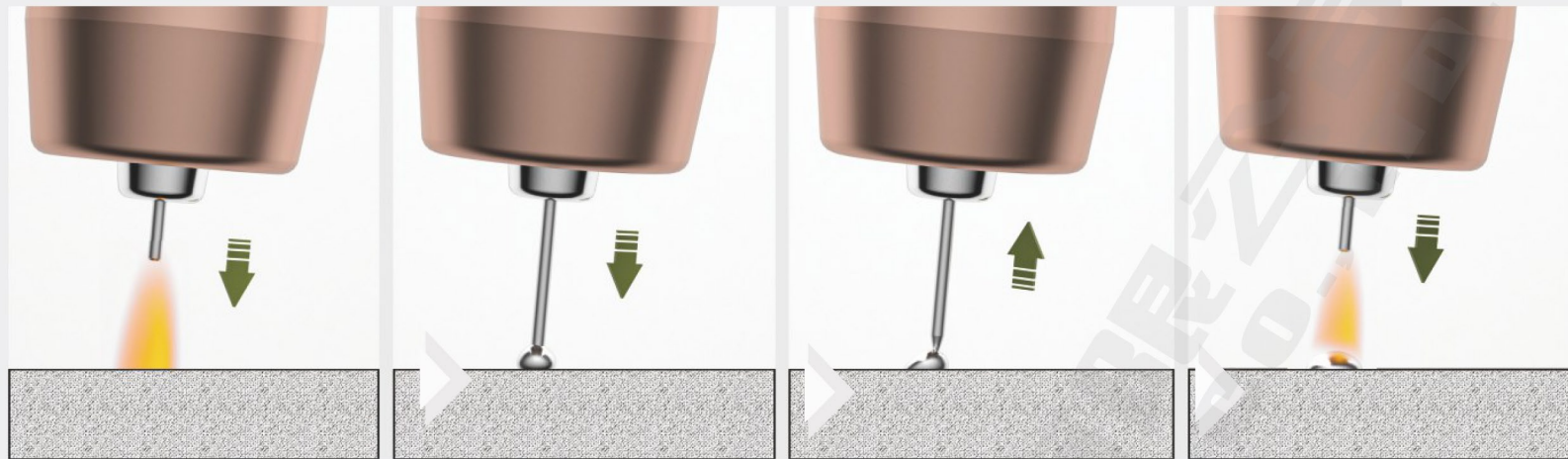
具备水流量检测报警功能。
With water flow detection and alarm function.

具备水温监测功能。
Water temperature monitoring function.

❖ 微创冷焊工艺特点

● 超低飞溅

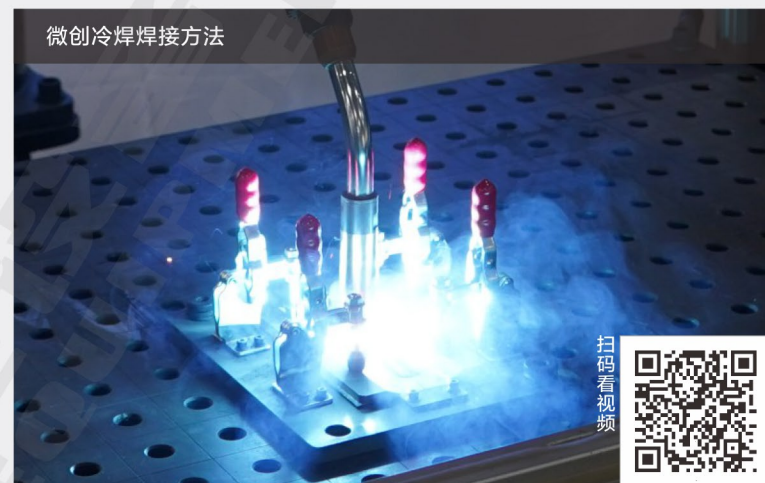
MDC焊接工艺采用双伺服电机送丝系统，依靠焊丝回抽实现熔滴过渡，相较于传统低飞溅焊接工艺，热输入更低、飞溅量更少、间隙容忍度更高。



在焊接短路状态下焊丝回抽运动，焊丝与熔滴实现微电流分离，抑制飞溅产生。



传统焊接方法



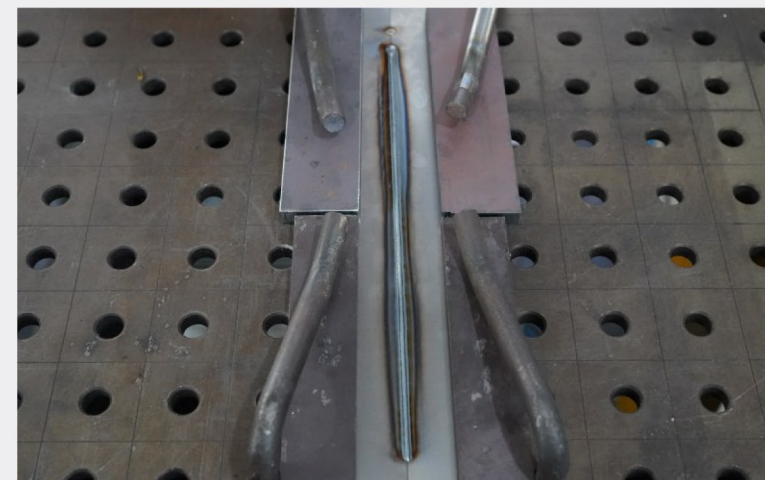
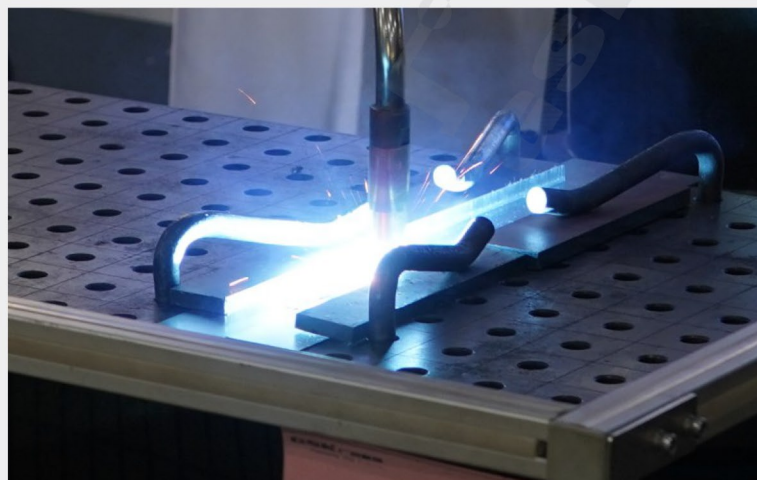
微创冷焊方法



扫码看视频

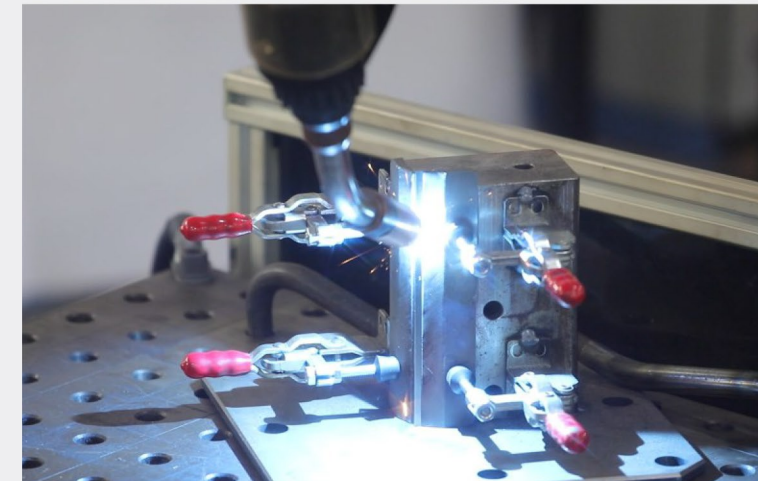
● 高速焊接

MDC焊接工艺最高过渡频率为200Hz，支持的最大焊接速度最高可达3m/min，达到世界领先水平，实现漂亮的焊缝效果，节省焊接时间，节省能耗和焊接耗材。



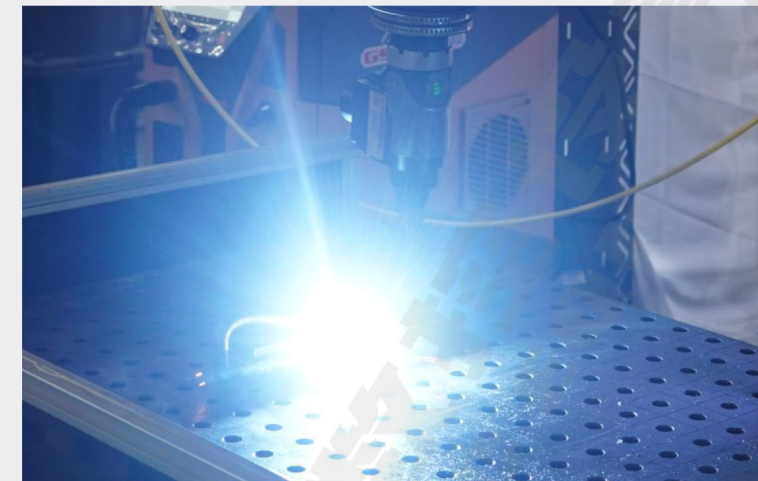
● 超薄板焊接

适宜超薄板和薄板（0.3-2mm），间隙容忍度高，不易出现烧穿等焊接缺陷，焊接速度快，焊接质量好。



● 大间隙焊接

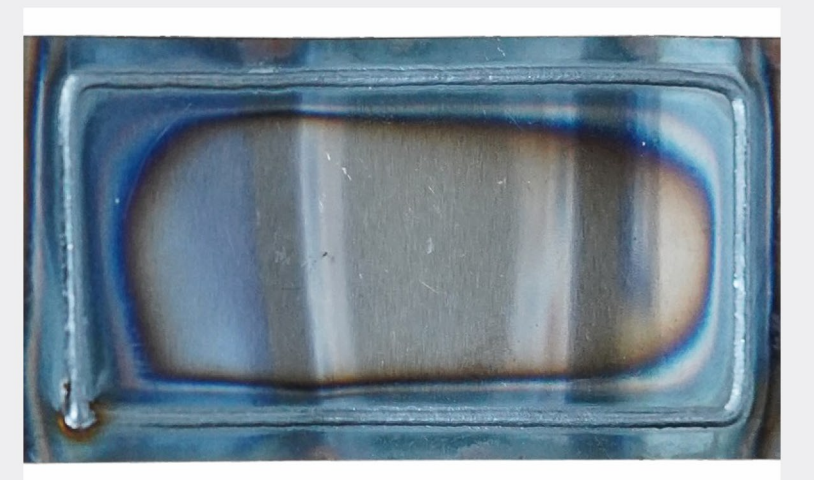
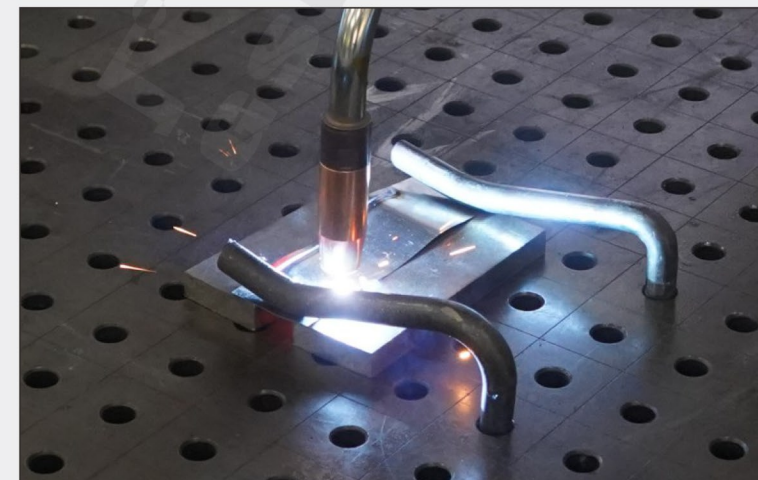
间隙容忍度高，间隙搭桥能力强，焊接效果好。



板材2mm，间隙3mm

● 干伸长自适应

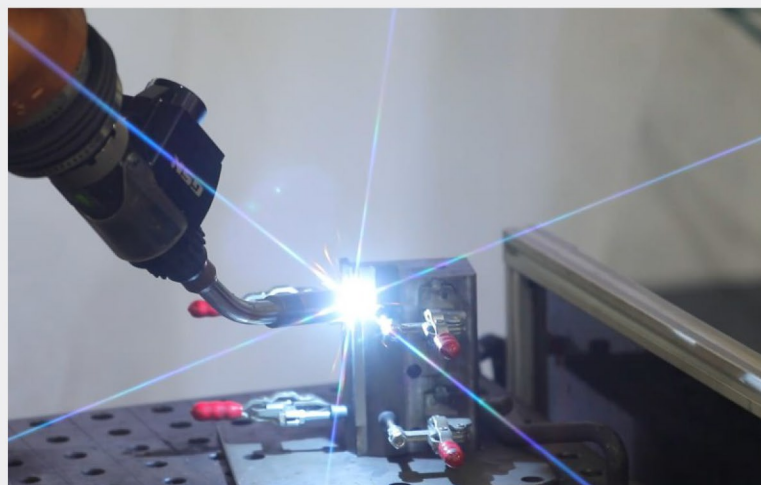
干伸长自适应功能可保证焊接效果变化很小，即使面对复杂工件，也能达到很好的焊接效果。



❖ 焊接工艺

MDC微创冷焊

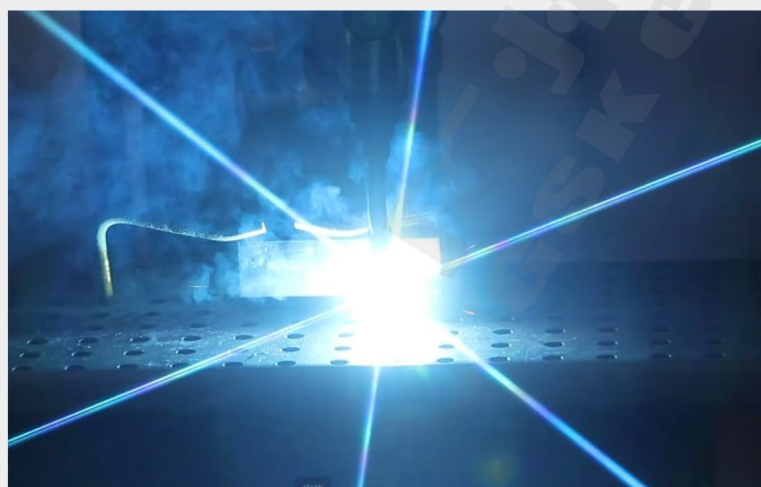
微创冷焊 (Mirco Deformation And Cold Welding)，广州数控创新技术，填补了国内的空白，为用户节省用电30%，焊接过程减少了高温对环境的影响，实现排放减少。专为薄板焊接设计的MDC焊接工艺，双伺服电机送丝系统控制焊丝周期送进-回抽，配合微秒级输出波形控制，实现极低热输入的熔滴过渡。可焊接0.3mm不锈钢、碳钢、硅钢、高强钢，铝合金、铜合金，且飞溅极低。



脉冲

以强电流熔化焊丝末端，主要依靠电磁收缩力与电弧推力促进熔滴过渡到熔池中。

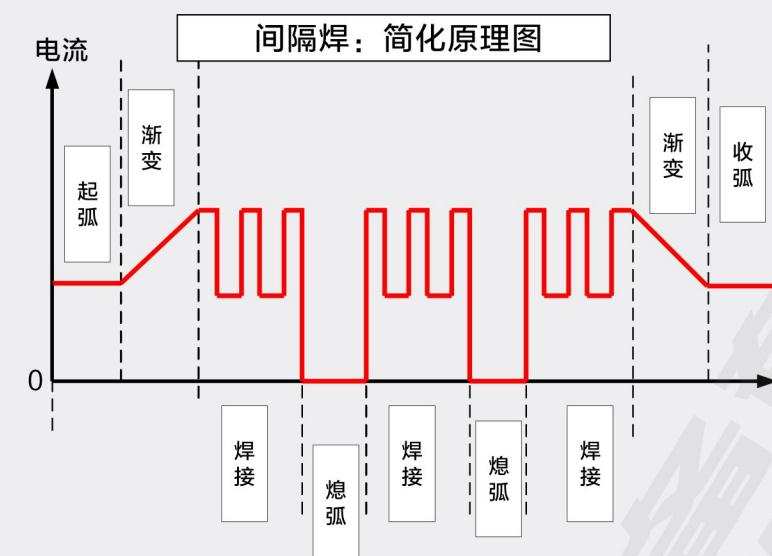
- 在平稳的脉冲焊接过程中，一脉一滴，没有飞溅。
- 相较于传统脉冲焊，针对中厚板研发的潜弧焊可以实现弧长更短、熔深更深。
- 工艺成熟稳定，熔宽与熔深大，焊接效果好。
- 焊接过程中送丝速度不变，熔敷效率稳定。



间隔焊

焊接过程中周期性熄弧、重新燃弧，焊接不连续。

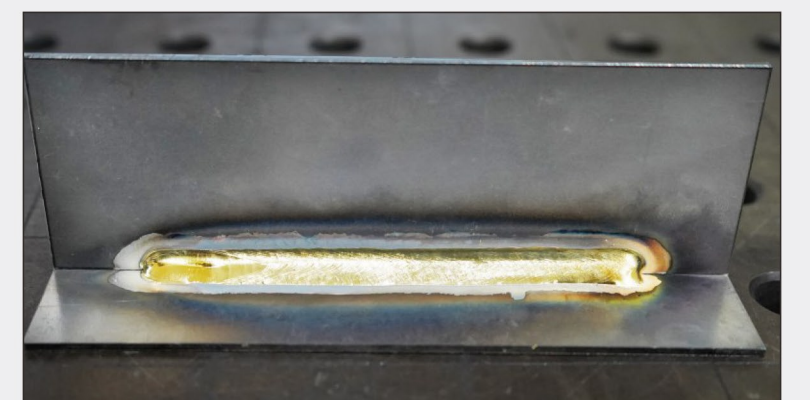
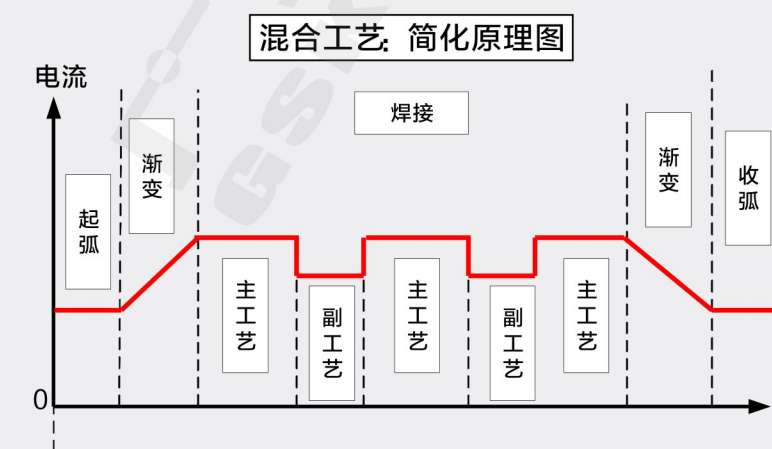
- 可实现鱼鳞纹焊接效果，热输入更低；
- 操作简单，参数调整更便捷。



混合工艺

焊接过程中连续焊接，但周期性切换两种工艺。

- 专为铝合金焊接设计，可实现鱼鳞纹焊接效果；
- 焊接过程中不熄弧，相较于间断焊，大幅度减少气孔缺陷；
- 支持选择同种工艺，切换不同电流，实现双脉冲功能；
- 支持MDC工艺与脉冲工艺混合，提升焊缝性能。



焊接工艺库

工艺	填充金属	焊丝直径	保护气体	工艺名	推荐板厚范围	
MDC	碳钢Steel	1.0mm	80%Ar+20%CO ₂	M102ST04	0.3mm~6mm	
				M102STP1	0.3mm~5mm	
		1.2mm	80%Ar+20%CO ₂	M122ST05	0.3mm~8mm	
				M122STP1	0.3mm~5mm	
		1.0mm	100%CO ₂	M104ST01	0.5mm~5mm	
				1.2mm	100%CO ₂	M124ST02
	不锈钢 CrNi 19-9/ 19-12-3	1.0mm	97.5%Ar+2.5%CO ₂	M103CN05	0.3mm~5mm	
				M103CN06	0.3mm~5mm	
				M103CNP1	0.3mm~5mm	
		1.2mm	97.5%Ar+2.5%CO ₂	M123CN01	0.3mm~6mm	
M123CNP1	0.3mm~5mm					
脉冲	碳钢Steel	1.0mm	80%Ar+20%CO ₂	P102ST01	2mm~17mm	
		1.2mm	80%Ar+20%CO ₂	P122ST01	3mm~20mm	
MDC	铝镁AlMg 5	1.2mm	100%Ar	M121AMP7	0.5mm~6mm	
				M121AMP8	0.5mm~5mm	
	铝硅AlSi 5	1.2mm	100%Ar	M121AS01	0.5mm~3mm	
				M121ASP6	0.5mm~4mm	
				M121ASP8	0.5mm~5mm	
	铝青铜CuAl 8	1.0mm	100%Ar	M101CA01	0.5mm~4mm	
		1.2mm	100%Ar	M121CA02	0.5mm~5mm	
	锡青铜CuSn 8	1.2mm	100%Ar	M121CS04	0.5mm~5mm	
	脉冲	铝镁AlMg 5	1.2mm	100%Ar	P121AM02	1.5mm~18mm
		铝硅AlSi 5	1.2mm	100%Ar	P121AS01	1.5mm~17mm

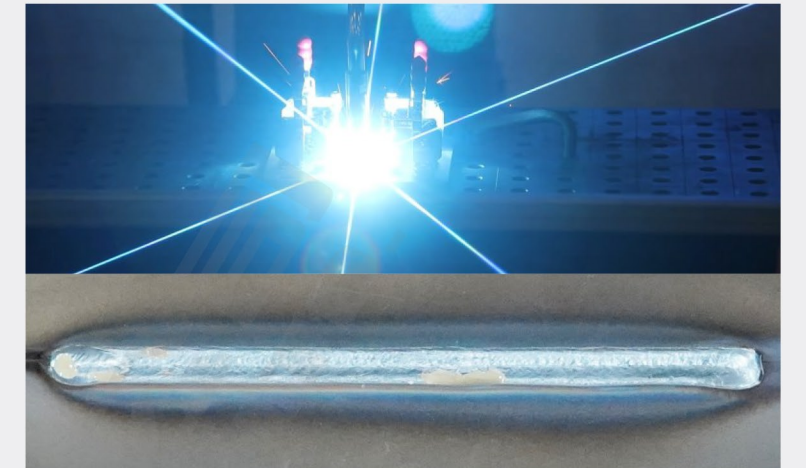
碳钢材料中的应用

超低飞溅(CO₂)

工艺号	M104ST01
焊缝位置	平角焊
适用行业	五金零件、两轮车及配件、三轮车、运动器材、汽车零部件、家电家具等部件
焊接条件	焊接材料: 碳钢 焊接电流: 135A 焊接速度: 12mm/s 板材规格: 2.0*150*50mm



扫码看视频

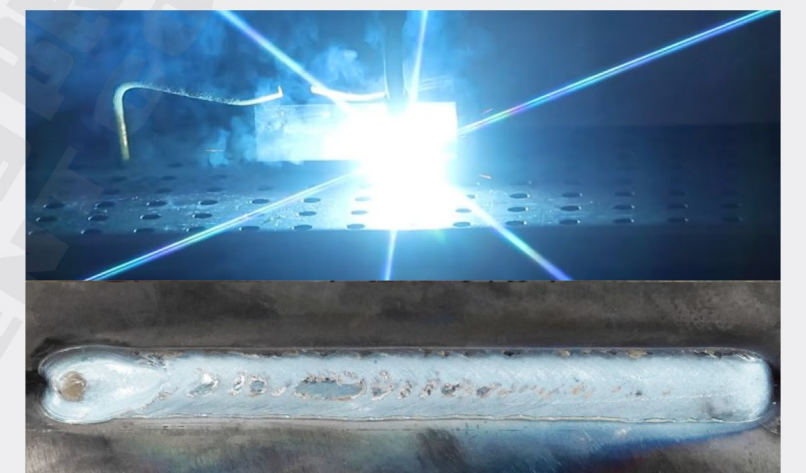


脉冲

工艺号	P122ST01
焊缝位置	平角焊
适用行业	造船、钢构、工程机械、矿山设备、机座、农机、重工行业等部件
焊接条件	焊接材料: 碳钢 焊接电流: 300A 焊接速度: 4mm/s 板材规格: 12*200*50mm



扫码看视频

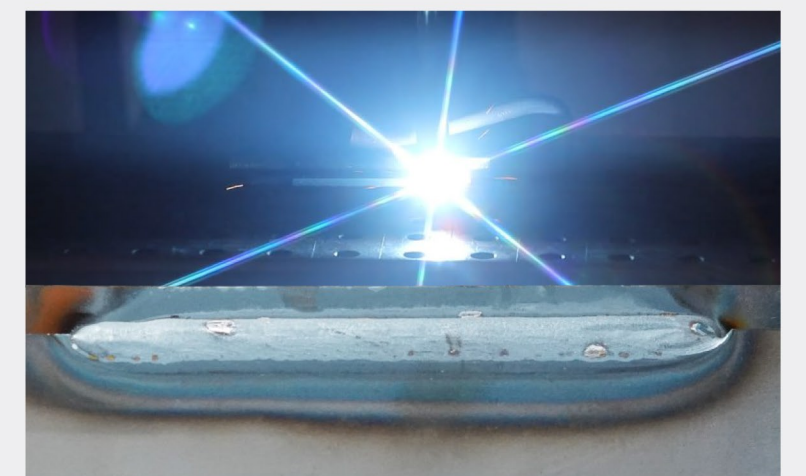


大间隙焊接

工艺号	M122STP1
焊缝位置	间隙搭接焊
适用行业	五金零件、两轮车及配件、三轮车、运动器材、汽车零部件、家电家具等行业部件
焊接条件	焊接材料: 碳钢 焊接电流: 190A 焊接速度: 6mm/s 板材规格: 2.0*150*50mm



扫码看视频



高速焊接

工艺号	M122ST05
焊缝位置	平焊
适用行业	汽车零部件、箱体、家电家具等部件
焊接条件	焊接材料: 碳钢 焊接电流: 190A 焊接速度: 50mm/s 板材规格: 1.0*500*50mm



扫码看视频



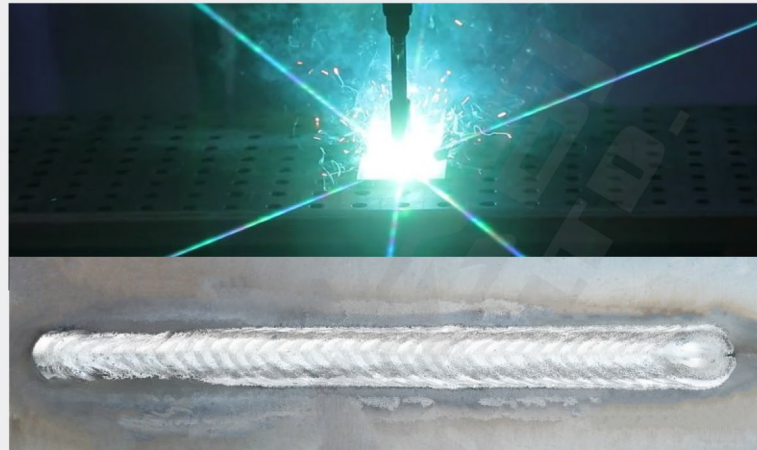
∴ 铝合金材料的应用

脉冲

工艺号	P121AM02
焊缝位置	平焊
适用行业	铝模板、铝游艇、铝运输车箱、铝油罐等部件
焊接条件	焊接材料: 5356铝合金 焊接电流: 320A-160A 焊接速度: 8mm/s 主工作周期: 80 副工作周期: 60 板材规格: 8.0*200*50mm



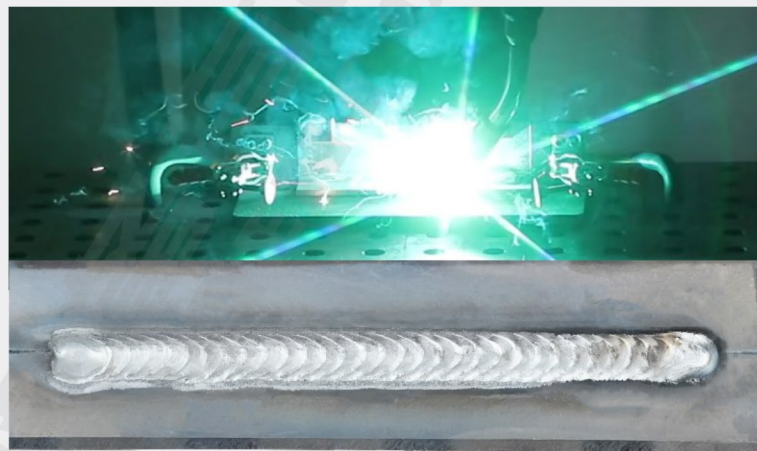
扫码看视频



工艺号	P121AM02
焊缝位置	角焊
适用行业	铝模板、铝游艇、铝运输车箱、铝油罐等部件
焊接条件	焊接材料: 5356铝合金 焊接电流: 320A-160A 焊接速度: 8mm/s 主工作周期: 80 副工作周期: 60 板材规格: 8.0*200*50mm



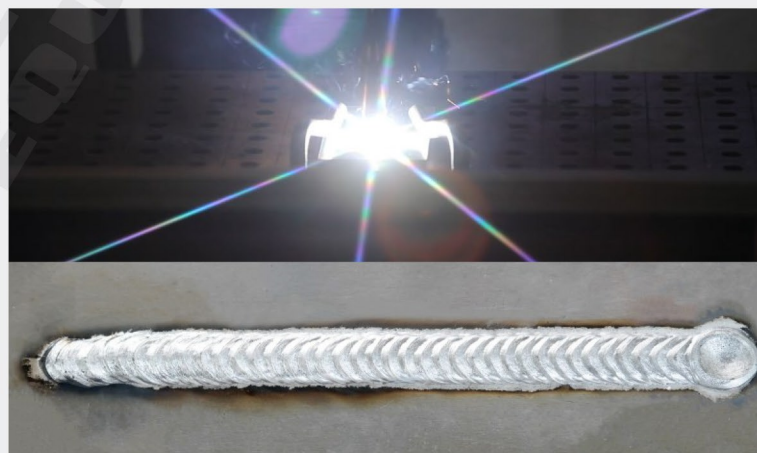
扫码看视频



工艺号	M121AMP7
焊缝位置	平焊
适用行业	新能源汽车、共享车业、风机、舞台管架、家具、散热器等部件
焊接条件	焊接材料: 5356铝合金 焊接电流: 50A 焊接速度: 8mm/s 板材规格: 0.5*150*50mm



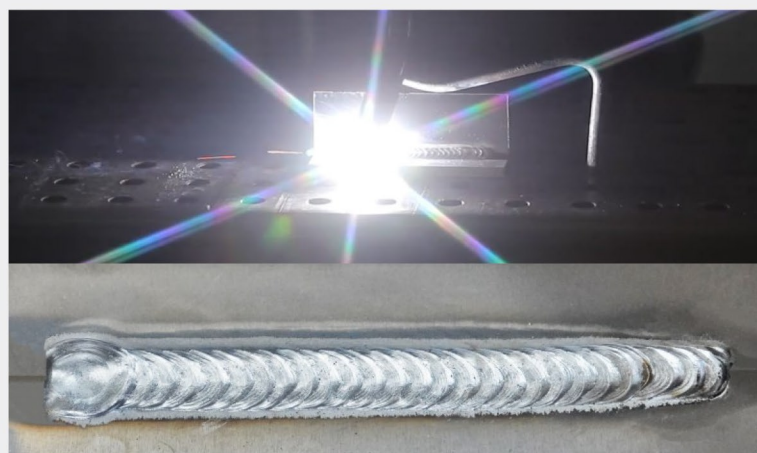
扫码看视频



工艺号	M121AMP8
焊缝位置	角焊
适用行业	新能源汽车、共享车业、风机、舞台管架、家具、散热器等部件
焊接条件	焊接材料: 5356铝合金 焊接电流: 90A 焊接速度: 8mm/s 板材规格: 0.8*150*50mm



扫码看视频



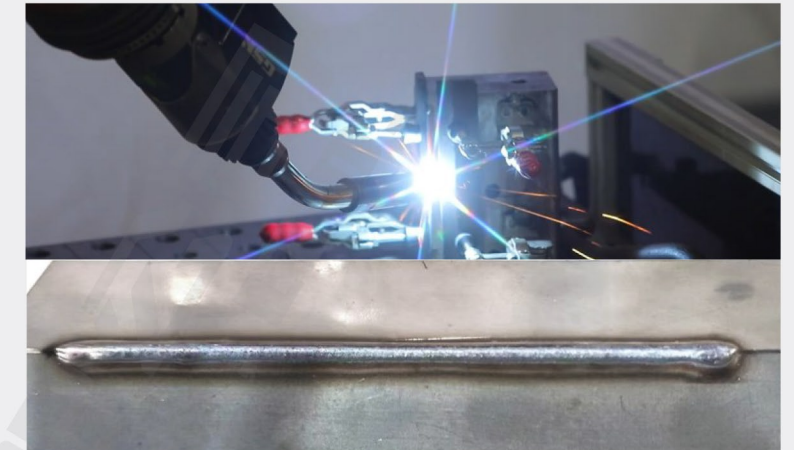
∴ 不锈钢材料的应用

超薄板焊接

工艺号	M103CNP1
焊缝位置	外角立焊
适用行业	水箱储罐、汽车排气系统部件、机箱等部件
焊接条件	焊接材料: 不锈钢 焊接电流: 45A 焊接速度: 18mm/s 板材规格: 0.5*150*25mm



扫码看视频



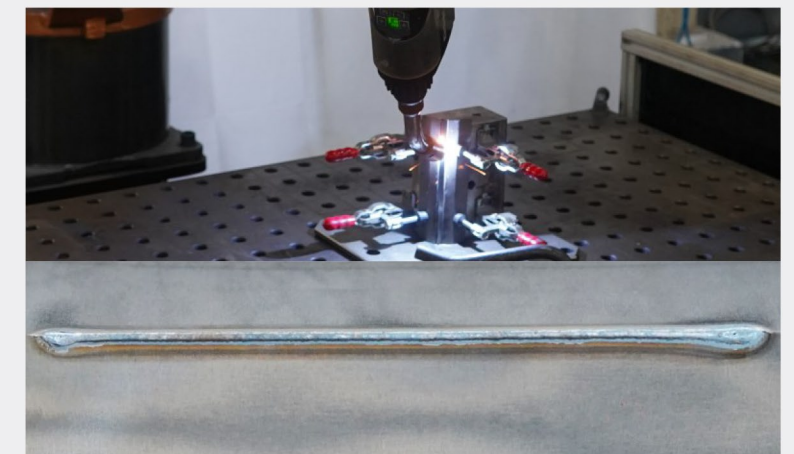
∴ 硅钢材料的应用

超薄板焊接

工艺号	M122ST05
焊缝位置	外角立焊
适用行业	水箱储罐、汽车排气系统部件、机箱等部件
焊接条件	焊接材料: 硅钢 焊接电流: 50A 焊接速度: 33mm/s 板材规格: 0.3*150*25mm



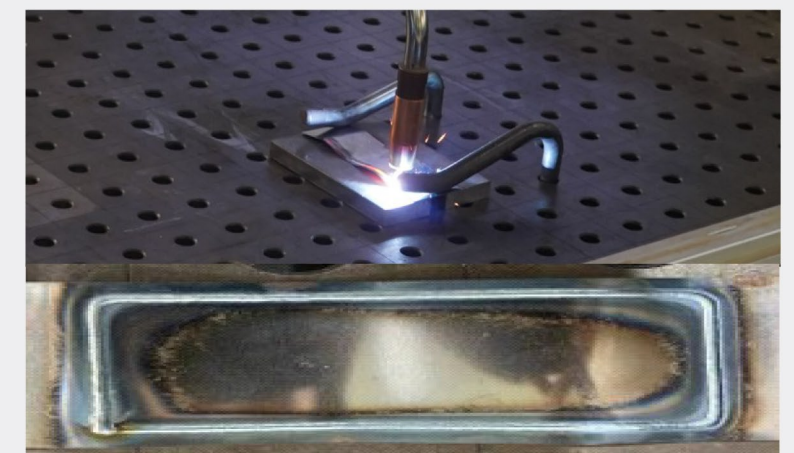
扫码看视频



工艺号	M122ST05
焊缝位置	平焊
适用行业	电机零部件
焊接条件	焊接材料: 波浪形硅钢 焊接电流: 50A 焊接速度: 35mm/s 板材规格: 0.3*150*50mm



扫码看视频



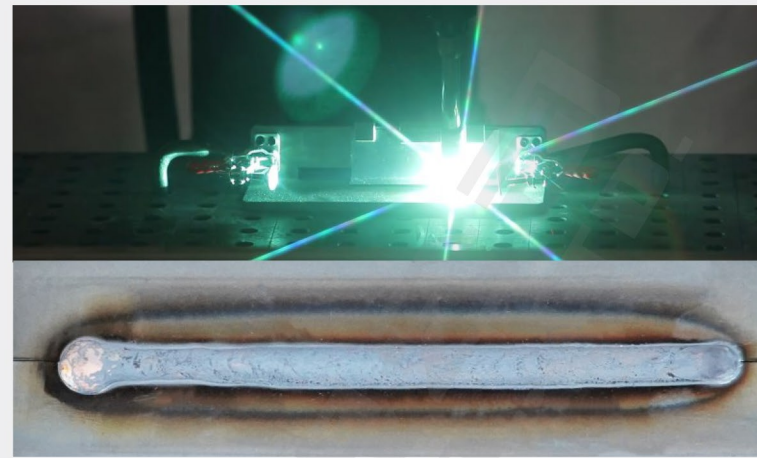
混合材料的应用

碳钢、锡青铜

工艺号	M121CS04
焊缝位置	平焊
适用行业	轴套、液压杆等部件
焊接条件	焊接材料: 锡青铜、碳钢 焊接电流: 160A 焊接速度: 10mm/s 板材规格: 2.0*150*50mm



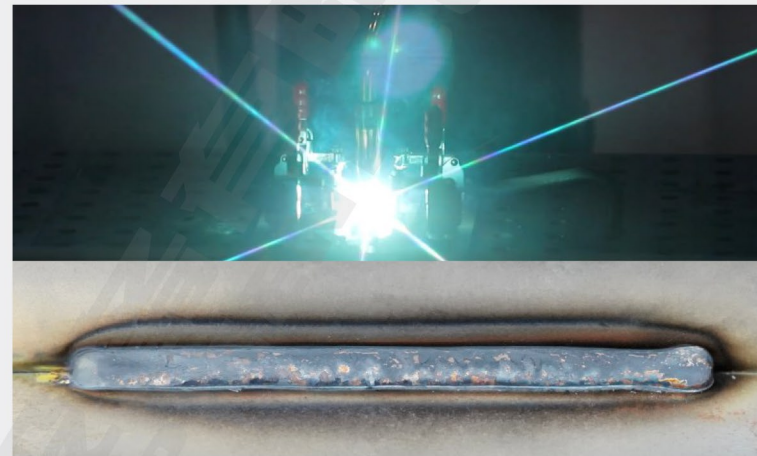
扫码看视频



工艺号	M121CS04
焊缝位置	角焊
适用行业	轴套、液压杆等部件
焊接条件	焊接材料: 锡青铜、碳钢 焊接电流: 160A 焊接速度: 15mm/s 板材规格: 2.0*150*50mm



扫码看视频

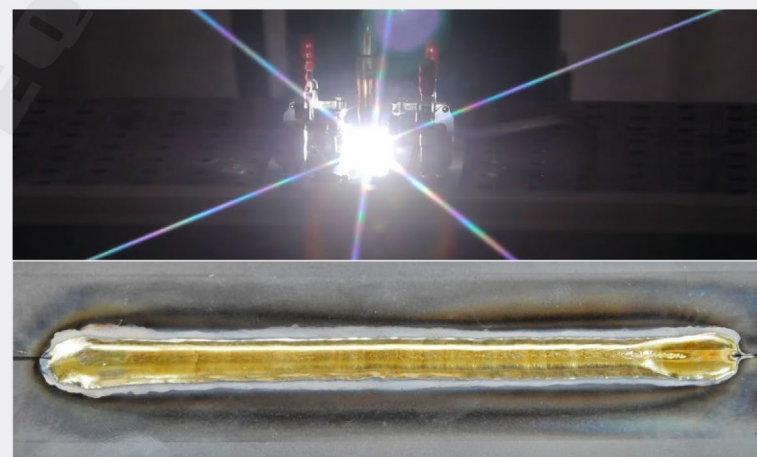


碳钢、铝青铜

工艺号	M121CA02
焊缝位置	平焊
适用行业	阀门、活塞杆等部件
焊接条件	焊接材料: 铝青铜、碳钢 焊接电流: 150A 焊接速度: 15mm/s 板材规格: 2.0*150*50mm



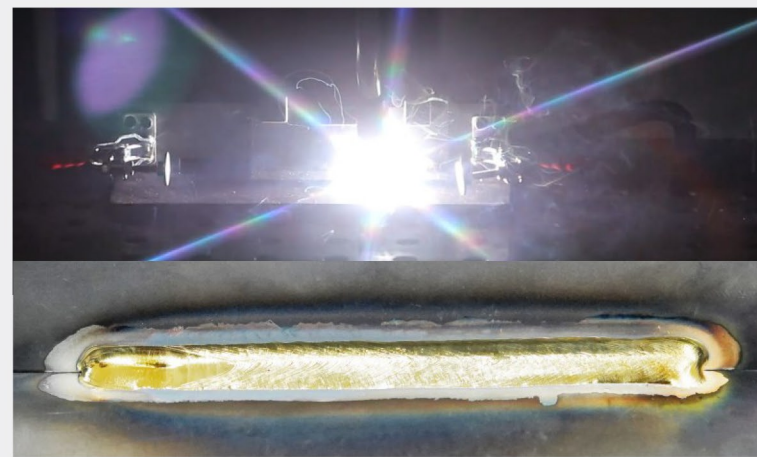
扫码看视频



工艺号	M121CA02
焊缝位置	角焊
适用行业	阀门、活塞杆等部件
焊接条件	焊接材料: 铝青铜、碳钢 焊接电流: 160A 焊接速度: 10mm/s 板材规格: 2.0*150*50mm

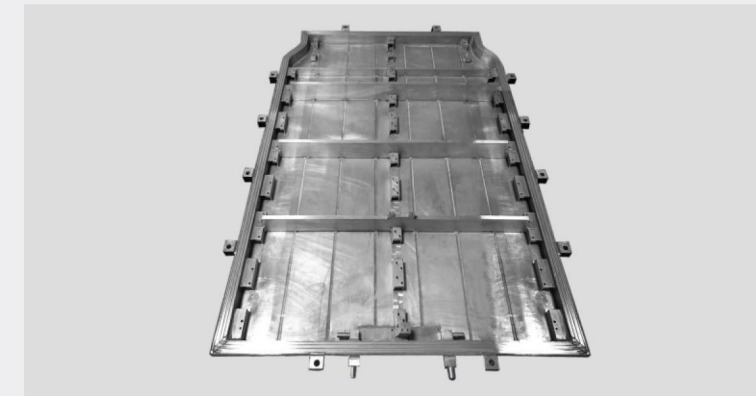


扫码看视频



行业应用

铝合金行业应用



新能源电池箱



风机



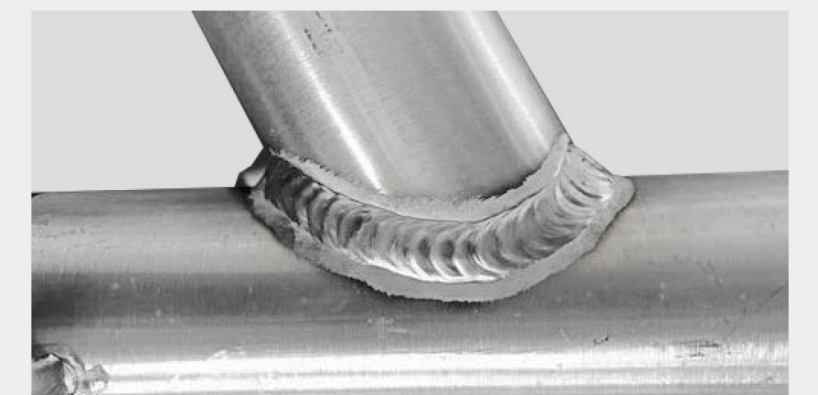
滑板车



自行车

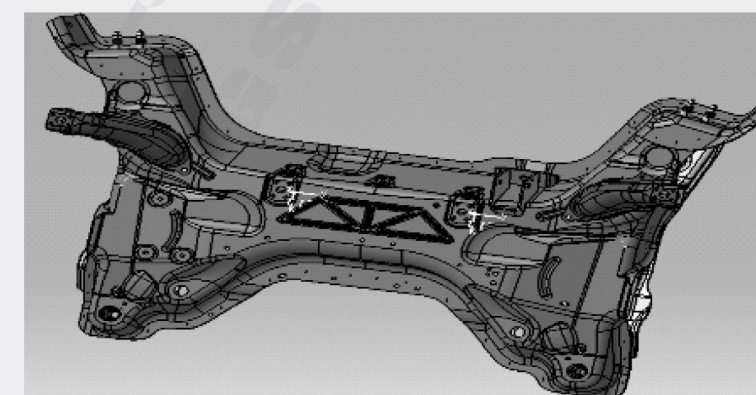


置物架



轮椅管架

镀锌板行业应用



汽车底盘

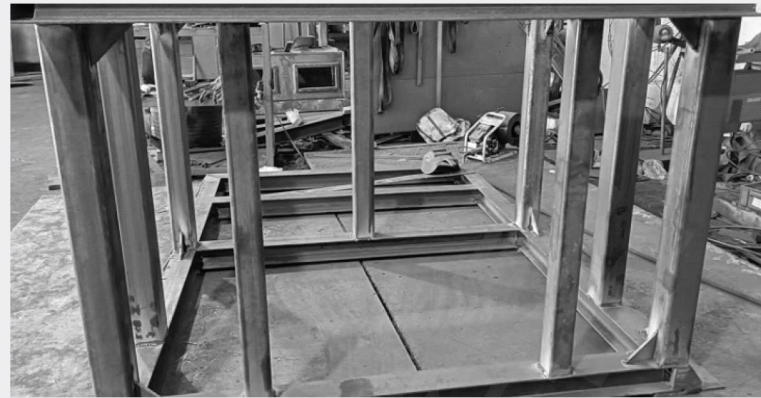


通风管道

碳钢行业应用



汽车座椅



钢结构



冰箱压缩机



电力变压器

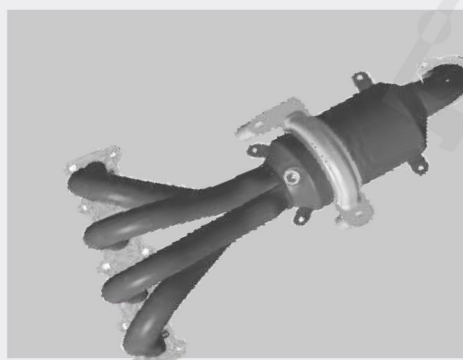


设备基座

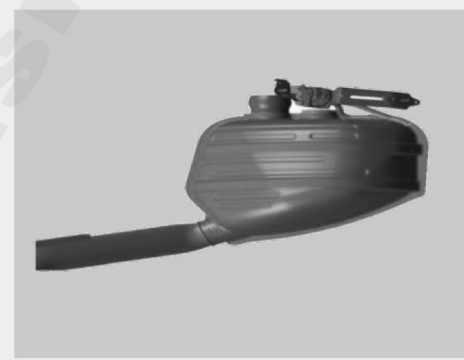


割草机

不锈钢行业应用



汽车歧管

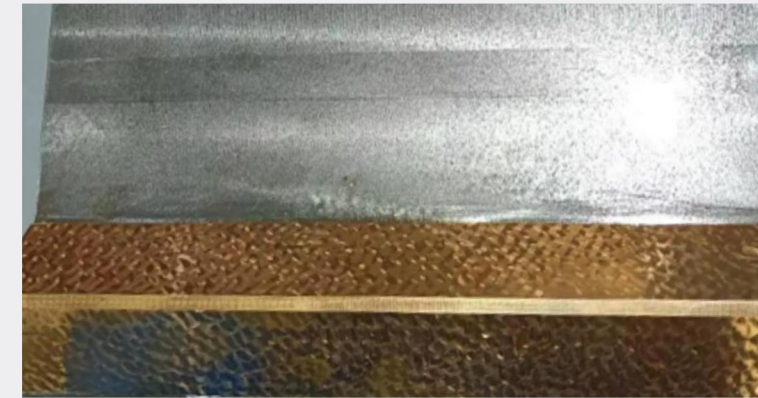


汽车排气总成



设备管套

增铜行业应用



机床导轨



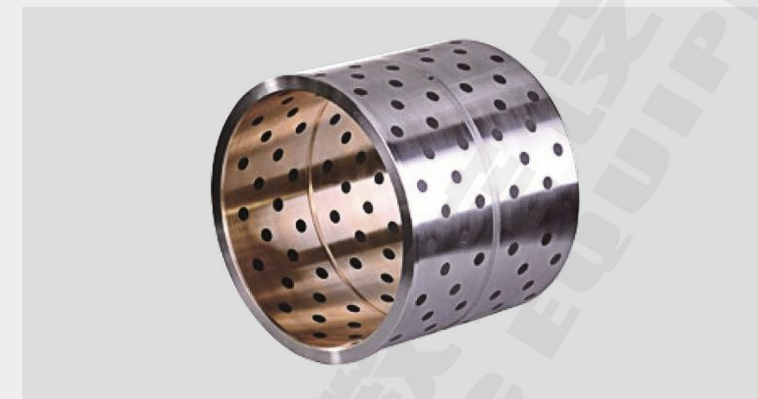
阀门



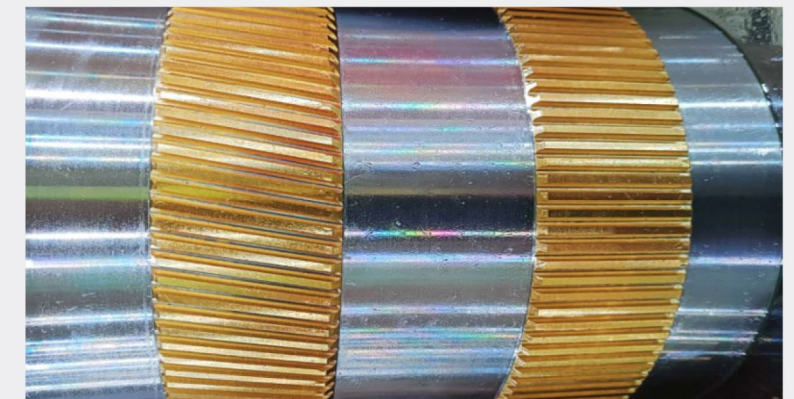
开关活塞



风电



注塑机钢套



弹带

电弧增材应用



炮弹体

增材材料： ER70S-G/1.2mm焊丝
 电 流： 135-140A
 焊接速度： 8mm/s
 增材时间： 30小时
 弹体壁厚： 4mm



扫码看视频

∴ GSK数控神焊单元 GSK MAGIC WELDING UNIT

数控神焊单元构成

CNC Magic Welding Unit Composition

GSK MDC-500P全数字高端焊机+GSK RH系列高性能中空机器人。

广数自主研发，融合了先进的焊接工艺技术和机器人控制技术，有效解决1.0mm以下的薄板和超薄板MIG/MAG焊接工艺存在热输入量大、变形严重、焊接飞溅等焊接问题，更好实现机器人自动化焊接应用。

GSK MDC-500P digital high-end welder +GSK RH series high performance hollow robot.

Developed independently by Guangzhou Shukong, it integrates advanced welding technology and robot control technology to effectively solve the welding problems of thin and ultra-thin plate MIG/MAG welding process of 1.0mm or less, such as large heat input, serious deformation, welding splash and so on, so as to better realize the application of robot automatic welding.



GSK RH系列中空焊接机器人

GSK RH Series Hollow Welding Robot



七关节机器人

7-joint Industry Robot
GSK RH06B1-1605



六关节机器人

6-joint Industry Robot
GSK RH06A2-1490
GSK RH06A2-2000

应用领域 Application Areas

汽车及配件、摩托车及配件、农业机械、工程机械等五金焊接领域。

Hardware welding fields such as automobiles and accessories, motorcycles and accessories, agricultural machinery, engineering machinery, etc.

规格参数

Specification parameters

项目	GSK RH06B1-1605	GSK RH06A2-2000	GSK RH06A2-1490	
自由度	7	6	6	
驱动方式	交流伺服驱动	交流伺服驱动	交流伺服驱动	
有效负载(kg)	6	6	6	
重复定位精度(mm)	±0.05	±0.05	±0.05	
运动范围(°)	J1	±170	±170	
	J2	+110~-70	+140~-70	+115~-80
	E	±90	/	/
	J3	+80~-150	+75~-140	+80~-150
	J4	±180	±180	±180
	J5	±135	±135	±135
最大单轴速度(°/s)	J6	±360	±360	±360
	J1	200	175	200
	J2	173	165	200
	E	200	/	/
	J3	200	195	200
	J4	288	282	282
本体质量(kg)	J5	375	370	370
	J6	630	630	630
		215	265	190

结构配置

STRUCTURAL CONFIGURATION

全新一体化驱动

New Integrated Drive

焊接机器人配置全新一体化驱动，安全可靠、故障较低；一体式伺服配置电柜体积减小约50%，重量降低约30%，使用的现场布局更为灵活；采用共母线整流技术，各轴加减速运行时实现能量互馈补偿，机器人在同一运动状态下耗电量降低约30%，更为低耗环保节能；集成电机抱闸闭环检测及动态制动功能，更为安全。

The welding robot is equipped with a new integrated drive, which is safe and reliable and low failures; the volume of the configured cabinet of integrated servo is reduced by about 50%, and the weight is decreased by about 30%, and the site layout used is more flexible. The common Bus rectification technology is adopted and the energy mutual feedback compensation is carried out when the acceleration or deceleration of each axis is performed. In the same motion state, the power consumption of robot is decreased about 30%, which can be saved the energy for low consumption and environmental protection. The integrated motor brake closed-loop detection and dynamic braking function are safer.



电机运行速度波动降低30%

Fluctuation Of motor's OperationSpeed Reduces 30%

采用全新高速电机，机器人运动过程更平稳、更可靠。

With the new high-speed motor, the robot movement process is more stable and reliable.



GSK RH06B1七关节机器人

GSK RH06B1 7-joint Industry Robot

亮点

Highlights

焊接范围灵活
Flexible connection range
小工件全周焊接
Full welding of small workpieces

使用成本能耗成本更低
Lower cost of use and energy consumption
提升经济效益
Improve economic benefits

设备部署周期短
Short cycle of equipment department
运行调试简单
Simple operation and debugging

集成化作业
Integrated operations
减少工序 提升效率
Reduce the procedures

减少机器人数量
Reduce the number of robots
提高厂房利用率
Improve the utilization of workshop

未来市场增速较高
Higher speed-up in the future market
机器人需求量大
Wider demands of robot

+ 提升市场效益
+ 降低焊接成本

+ Improve Market Efficiency
+ Reduce Welding Cost



优势

Advantage

+ 可以躲避某些特定的目标
+ It can be avoided some certain targets

+ 实现对焊接件的多方位焊接
+ To realize multi-directional welding of welded parts

+ 减少焊接过程的工序
+ To reduce the processes during the welding

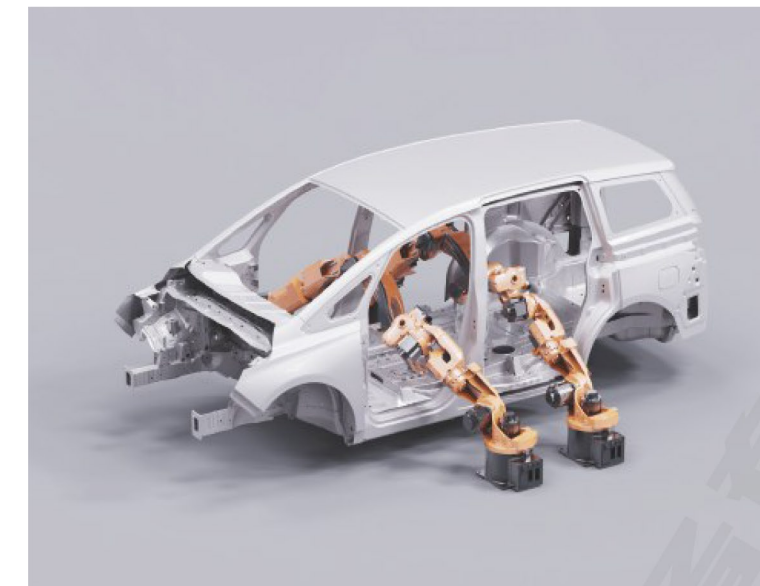
+ 灵活适应某些特殊工作环境
+ To flexibly adapt some special working environment

高运动灵活性

High Mobility And Flexibility

有利于焊接工序集成化，减少焊接工序，进而减少焊接夹具、焊接机械手数量。

It is beneficial to the integration of the welding technologies and reduces the welding technologies, thereby reduces the number of welding fixtures and welding manipulators.



七关节机器人在汽车车体内焊接的应用
Application Of 7-joint Industrial Robot In Welding Of Car body.

中空结构设计

Hollowed Areas

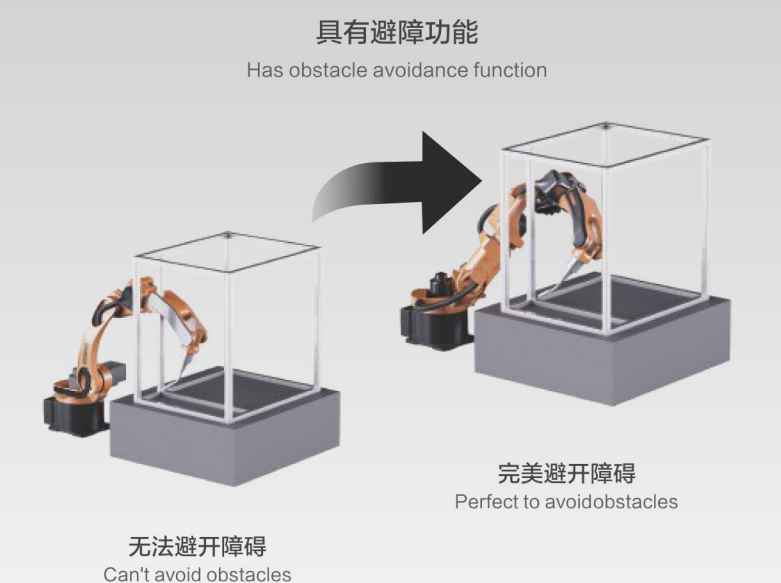
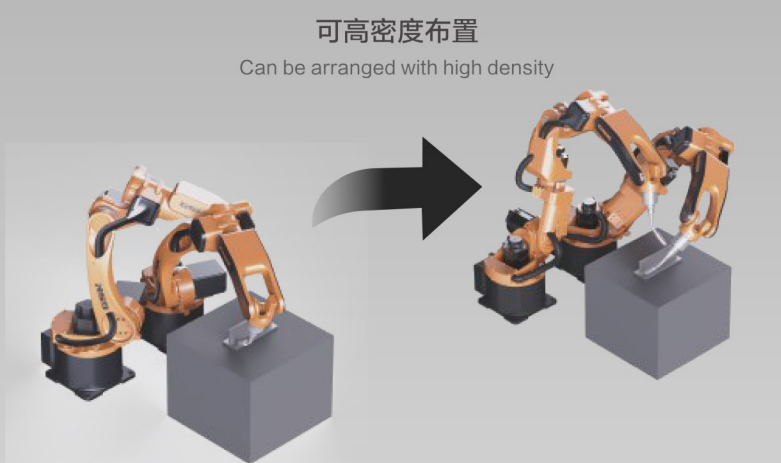
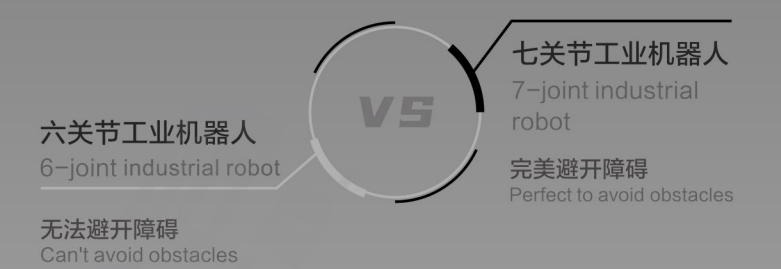
七关节与中空型腕部结构结合，解决走线缠绕，部件互相干涉的问题。

The combination of seven joint and hollow wrist structure solves the problem of entanglement in wiring, The problem of interference between components.



优异的七关节能力

Excellent seven joint capability



检测认证 TESTING AND CERTIFICATION



GSK MDC-500P
全数字高端焊机
一级能效
检测认证报告

增材制造试样物理性能
分析检测
一级性能
检测认证报告

专利证书 PATENT CERTIFICATE



差值复合送丝控制方法、装置、计算机设备及存储介质 发明专利

一种热交换器 实用新型专利

一种可快速拆装的电机机壳 实用新型专利

一种具有散热结构的机壳及焊机 实用新型专利

弧焊机 (MDC02) 外观专利

手推车 (MDC-HC02) 外观专利

弧焊电源 (MDC-500P) 外观专利

送丝机 (MDC-WF02) 外观专利

焊丝安装盒 (MDC-WRB02) 外观专利

用于智能焊机的系统图形用户界面 外观专利

液体冷却装置 (MDC-WT02) 外观专利

规格参数 SPECIFICATION PARAMETERS

项目	参数	
焊机主机	型号	GSK MDC-500P
	输入电压	三相AC380V ± 15%
	能效等级	一级能效
	输出电流范围	30A-500A
	输出电压范围	12V-39V
	开关频率	64kHz
	焊接适用材料	碳钢、不锈钢、铝镁合金、铝硅合金、铜铝合金等
	防护等级	IP21S
	绝缘等级	F
	起弧成功率	大于99.9%
	过渡频率	最高200Hz
	重量	66kg
	外形尺寸	786mm x 366 mm x 675mm
焊机水箱	型号	GSK MDC-WT02
	电源电压	交流380V
	水泵功率	160W
	额定最大压力	0.25MPA
	水容量	5.9L
	工作温度	-15℃ ~ 60℃
	重量(不含冷却液)	35.5kg
	尺寸	773mm x 366 mm x 268mm
送丝机构	型号	GSK MDC-WF02
	额定电流	3.5A
	额定电压	48V
	送丝速度	0.4m/min-20m/min
	焊接电流	350A/100%
	焊丝直径	1.0mm-1.2mm
	外形尺寸	222mm x 187mm x 256mm
重量 (裸机/含送丝架)	4.7kg/14.7kg	
推拉丝机构	型号	GSK MDC-WG02
	焊接电流	350A/100%
	冷却方式	水冷
	焊丝直径	1.0-1.2mm
	电机最大加速度	745m/s ²
	重量 (含焊枪)	2.3kg
缓冲器	型号	GSK MDC-WB02
	适用机器人	不同的安装板可适配不同的机器人
	外形尺寸	467mm x 221mm x 126mm
重量 (含4.4m线缆)	13.6kg	